



LOW SPEED GRINDERS

MODELS : FG-3VX-1F, -2F, -3F, -6F



FG-3VX-1F, -6F



FG-3VX-2F, -3F

SPECIFICATIONS

Model	Collet Size		Max.Dia. (Wheel Size) mm	Free Speed min ⁻¹	Spindle Thread Size	Overall Length (about) mm	Mass (about) kg	Max. Air Consumption m ³ /min	Air Inlet Thread Size	Air Hose Size mm
	mm	in								
FG-3VX-1F	6	1/4	—	7,600	W3/8-16	331	1.4	0.45	Rc1/4	9.5
FG-3VX-2F	—	—	75x19x9.5	9,500	W3/8-16	316	1.4	0.47	Rc1/4	9.5
FG-3VX-3F	—	—	125x19x9.5	7,600	W3/8-16	316	1.4	0.45	Rc1/4	9.5
FG-3VX-6F	6	1/4	—	12,000	W3/8-16	331	1.4	0.47	Rc1/4	9.5

The performance figures are at 0.63 MPa(6.3bar).

 Refer to "The Instructions and Warning for Safety Use" enclosed in each tool box.

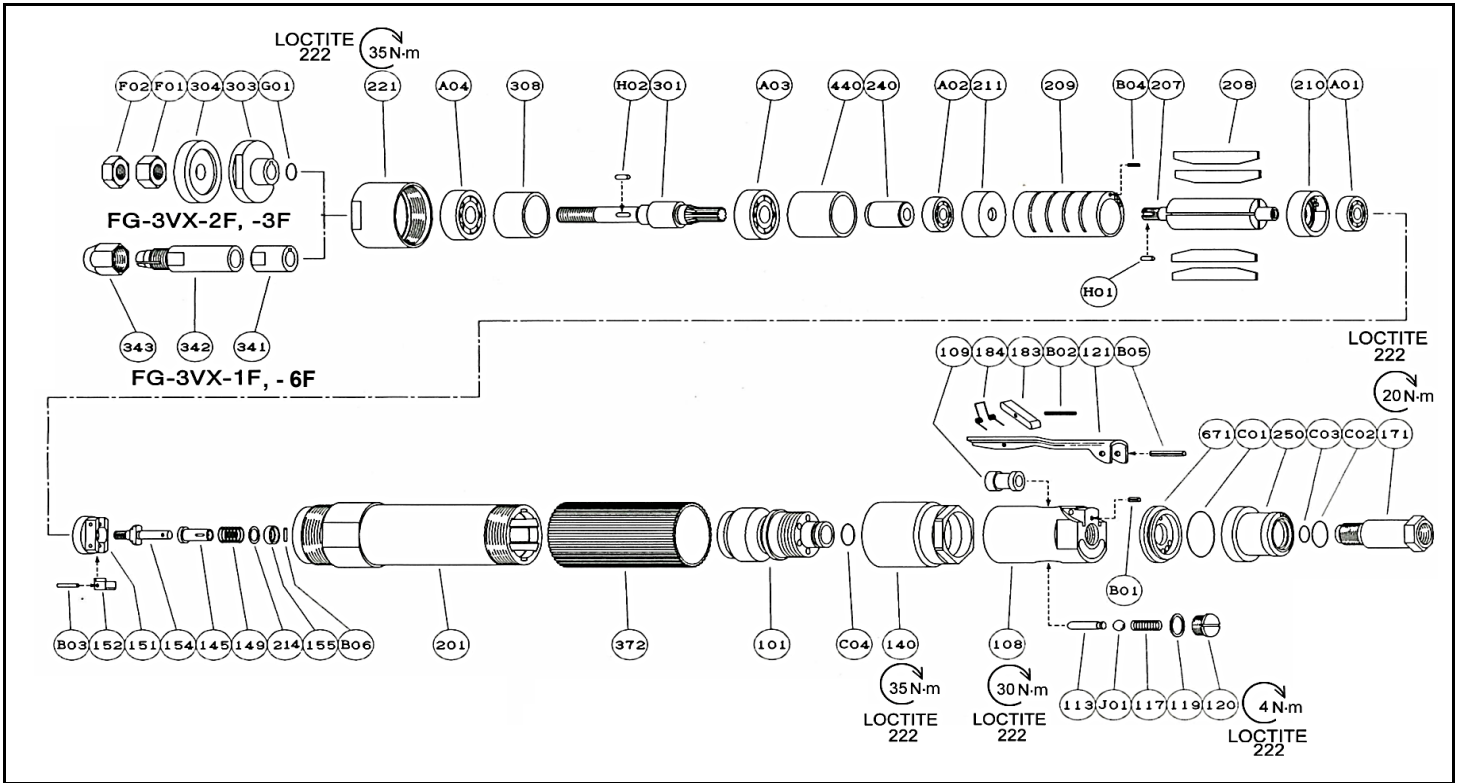
Fuji Industrial Technique Co.,Ltd.

2-1-14, Kamiji, Higashinari-ku, Osaka, 537-0003 Japan

Tel : 81-6-6972-2335

Fax : 81-6-6972-2380

MODELS : FG-3VX-1F, -2F, -3F, -6F



ITEM	PART NO	FUJI NO	DESCRIPTION	QTY	MATERIAL
FG-3VX-1F, -2F, -3F, -6F					
108	5412054212	G-209108-00	Throttle Valve Body	1	Aluminum
(109)	5412053935	G-144109-00	Throttle Valve Bushing	1	Copper
113	5412053936	G-144113-00	Throttle Valve Rod	1	Steel
117	5412051392	D-021117-00	T.V. Spring	1	Steel
119	5412051393	D-021119-00	T.V. Cover Packing	1	Cellulose
120	5412051394	D-021120-00	Throttle Valve Cover	1	Steel
171	5412056900	W-100171-00	Inlet Joint	1	Steel
250	5412054216	G-209250-00	Exhaust Cover	1	Aluminum
671	5412054218	G-209671-00	Exhaust Cover Joint	1	Steel
B01	5412056262	SP-2.56	Spring Pin	1	Steel
C01	5412055238	O-S28	"O"Ring	1	Rubber
C02	5412055223	O-S16	"O"Ring	1	Rubber
C03	5412055217	O-S10	"O"Ring	1	Rubber
J01	5412050924	B-5/16U	Ball	1	Plastic
—	5412050634	A-122019-01	(F) Lock Lever Ass'y		
121	5412050637	A-122121-00	Throttle Valve Lever	1	Steel
183	5412053938	G-144183-02	Lock Key	1	Steel
184	5412053939	G-144184-00	Lock Spring	1	Steel
B02	5412056268	SP-218	Spring Pin	1	Steel
—	5412054182	G-197010-00	Governor Weight Ass'y		
151	5412050669	A-124151-00	Governor Cage	1	Steel
152	5412054184	G-197152-00	Governor Weight	2	Steel
154	5412050670	A-124154-00	Governor Shaft	1	Steel
B03	5412054229	GP-212GCH	Grooved Pin	2	Steel
101	5412054211	G-209101-00	Housing Cover	1	Steel
140	5412054213	G-209140-00	Cup Nut	1	Steel
145	5412050365	A-066145-00	Governor Valve	1	Steel
149	5412054183	G-197149-00	Governor Valve Spring (FG-3VX-1F,-3F)	1	Steel
	5412054188	G-198149-00	Governor Valve Spring (FG-3VX-2F)	1	Steel
	5412050382	A-076149-00	Governor Valve Spring (FG-3VX-6F)	1	Steel
155	5412050367	A-066155-00	Governor Valve Spring Holder	1	Steel
201	5412054214	G-209201-00	Housing	1	Aluminum
207	5412050673	A-124207-00	Rotor	1	Steel
208	5412050674	A-124208-00	Rotor Blade	4	Plastic
209	5412050675	A-124209-00	Cylinder	1	Steel
(B04)	5412056272	SP-26	Spring Pin	1	Steel

ITEM	PART NO	FUJI NO	DESCRIPTION	QTY	MATERIAL
210	5412050676	A-124210-00	Cylinder Upper Plate	1	Steel
211	5412050677	A-124211-00	Cylinder Lower Plate	1	Steel
214	5412050368	A-066214-00	Adjusting Washer (Shim) <T=0.2>	(1)	Steel
	5412050369	A-066214-01	Adjusting Washer (Shim) <T=0.3>	(1)	Steel
	5412050370	A-066214-02	Adjusting Washer (Shim) <T=0.1>	(1)	Steel
	5412050371	A-066214-03	Adjusting Washer (Shim) <T=0.5>	(1)	Steel
221	5412054215	G-209221-00	Spindle Bearing Cover	1	Steel
240	5412054185	G-197240-00	Coupling	1	Steel
301	5412054186	G-197301-00	Wheel Spindle	1	Steel
308	5412054187	G-197308-00	Spacer	1	Steel
341	5412054096	G-161341-00	Chuck Collar	1	Steel
342	5412053716	G-017342-00	Collet <6mm>	1	Steel
	5412053717	G-017342-01	Collet <1/4>	1	Steel
343	5412054103	G-162343-00	Collet Nut	1	Steel
372	5412054217	G-209372-00	Plastic Cover	1	Plastic
440	5412054114	G-163440-00	Ring	1	Steel
A01	5412050987	BB-608MN	Ball Bearing	1	Steel
A02	5412050985	BB-608	Ball Bearing	1	Steel
A03	5412050966	BB-6001	Ball Bearing	1	Steel
A04	5412050966	BB-6001	Ball Bearing	1	Steel
B05	5412056282	SP-320	Spring Pin	1	Steel
B06	5412055068	NR-1.58.8	Needle Roller	1	Steel
C04	5412055219	O-S12	"O"Ring	1	Rubber
H01	5412054559	K-2.52.57F	key	1	Steel
H02	5412054577	K-338	key	1	Steel

FG-3VX-2F, -3F					
301	5412054189	G-198301-00	Wheel Spindle	1	Steel
303	5412054190	G-198303-00	Wheel Flange (A)	1	Steel
304	5412054138	G-170304-00	Wheel Flange (B)	1	Steel
F01	5412054858	N-W3/8	Nut	1	Steel
F02	5412054859	N-W3/8(3)	Nut	1	Steel
G01	5412056341	SR-SA10	Snap Ring	1	Steel

■ Accessories

PART NO	AC No.	DESCRIPTION	QTY	MATERIAL
5412054508	IH-8B	Inlet Hose	1	Steel Plastic · Rubber
5412052040	EH-50A	Exhaust Hose	1	Rubber · Plastic
5412052056	F-105	14mm OPEN-END WRENCH (FG-3VX-1F,-6F)	1	Steel
5412052057	F-106	17mm OPEN-END WRENCH (FG-3VX-1F,-6F)	1	Steel
5412052063	F-112	32mm OPEN-END WRENCH (FG-3VX-2F,-3F)	1	Steel

- The related parts are shown in a thick frame.
- Specify parts number and quantity when ordering.
- #108 and #209 are supplied together with parts shown in ().

